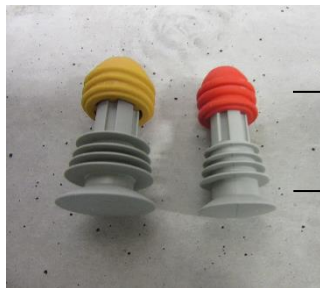


**TECHNICAL DATA SHEET (TDS)**

**The Peri plugs powered by BeSealed are meant for pressure resistant and watertight sealing of the holes in concrete constructions after removal of the Maximo formwork system. The Peri plugs are easy to install in one single movement (installation time = 1 second). No finishing or after-treatment is required.**

**DESCRIPTION**

- The Peri plugs consist of an impact proof and pressure resistant core and a water swellable soft sealing.
- The use of a complete set of Peri plugs (big and small plug) guarantees a pressure resistant and waterproof sealing of the holes in concrete constructions after removal of the Maximo formwork system.



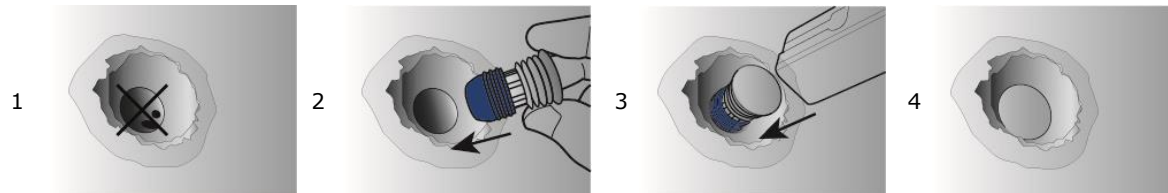
→ Soft water swellable sealing:  
100% watertight

→ Hard core:  
pressure resistant up to 5 bar

**ADVANTAGES**



- The hard core guarantees pressure resistance up to 5 bar.
- The use of a complete set of plugs guarantees sealing up to 5 bar. (see test report for more details)
- The Peri plug powered by BeSealed is fast and easy in use.
- Installation in one single move (installation time = 1 second), use only a hammer.
- Idiot-proof: wrong installation impossible thanks to smart sealing system.
- No finishing or after-treatment required.

## APPLICATION



1. Remove remaining concrete parts from the spacer hole.
2. Install the red Peri plug in the small hole (17.5mm) and the yellow Peri plug in the big hole (20-22.5mm).
3. Hit the plug with a hammer until only the last ring of the hard core is visible.
4. No finishing or after-treatment required.

## TECHNICAL DATA

Material	Hard core = impact proof polyamide (PA)	
	Soft sealing = hydrophilic water swellable polymer	
	Resistant to contact with a wide range of chemicals. Contact our technical department in case of doubt.	
Volume expansion in rain water	> 500%	
Volume expansion in concrete water	> 400%	
Volume expansion in 3w% salt water	ca. 150%	
Colour	Hard core = colour of concrete (grey)	
	Soft sealing = red (17.5mm) – yellow (20-22.5mm)	
Dimensions	17.5 mm	20-22.5mm
		

## SIZES AND PACKAGING

Size	Internal diameter spacer $\varnothing$ (mm)		Plug weight (g/piece)
17.5 mm	17.5 mm		9.14
20-22.5 mm	20.00 – 22.50 mm		13.04
Packaging	Pieces/bag	Bags/box	Boxes/pallet
	100 red + 100 yellow	5	18

## CERTIFICATES

Detailed reports and certificates available on request at [info@besealed.com](mailto:info@besealed.com)

## SAFETY

The safety datasheet is available on request at [info@besealed.com](mailto:info@besealed.com)